



For further informations and place an order

info@celldynamics.it 

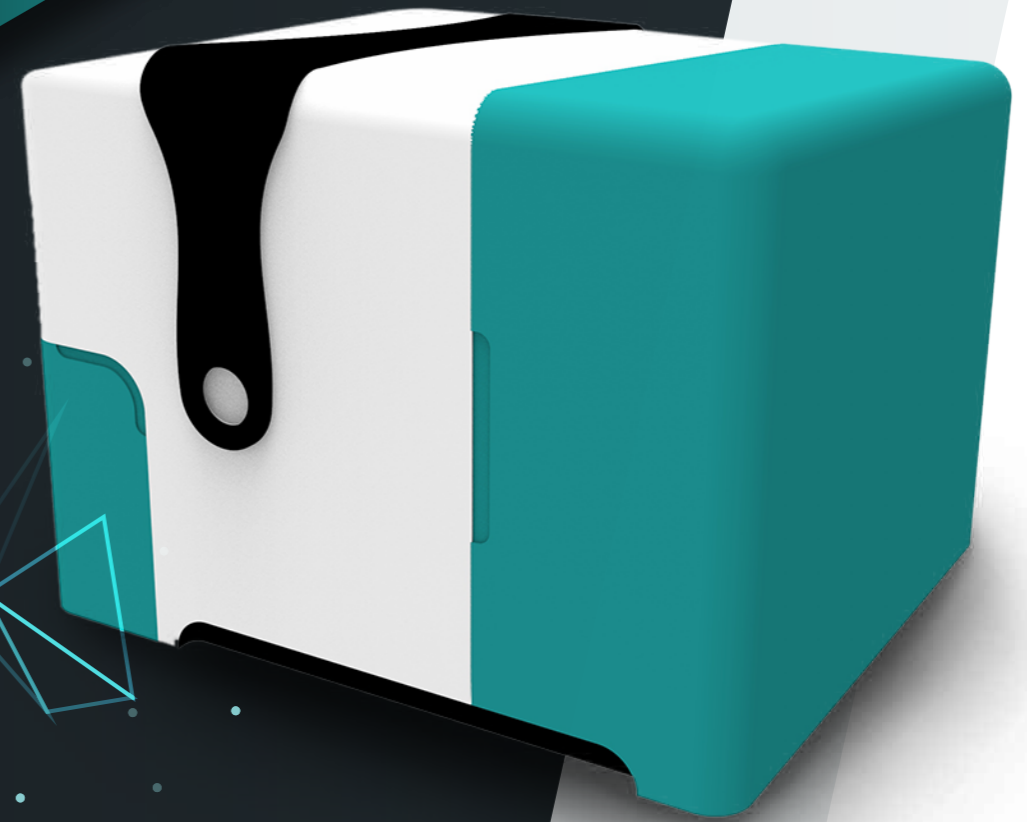
+39 051 6399215 

www.celldynamics.it 

Follow **CellDynamics** on your favourite social media outlets for the latest news.



## FLOATING 4D BIOLOGY



## INNOVATIVE TECHNOLOGICAL CONVERGENCE

- Microfluidic sample isolation and adaptive focusing;
- Suspension 3D cell culture;
- Contamination-free, temperature & atmosphere -controlled environment;
- Time saving automated protocols setting;
- Time-lapse imaging with advanced customizable microscopy.

“ Definitely, the best device for **3D Biology** on the market, now. ”

## KEY ELEMENTS

**CELLviewer** disposable chip traps single cells or cluster of cells by microfluidics.

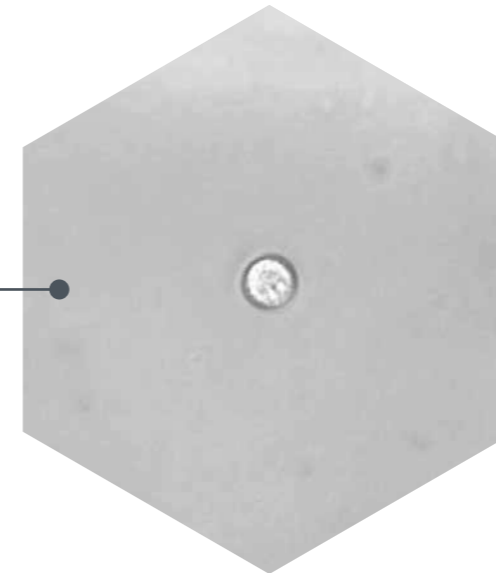
No cell contact with non biological surfaces, minimal physical stress.

**Patented** Feedback mechanism within optical and microfluidic systems adjusts cell position to the desired location.

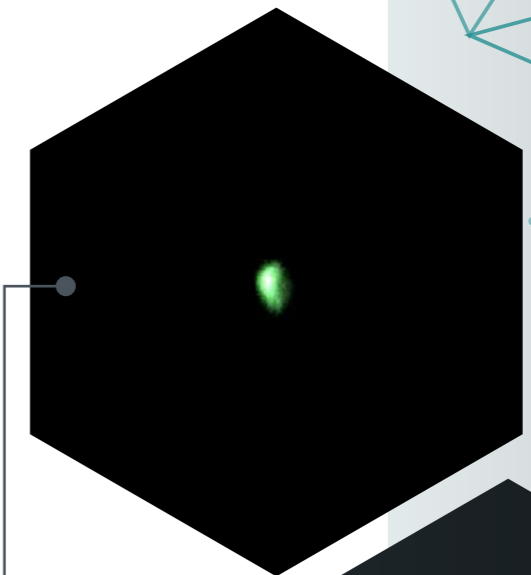
# IMAGING

Advanced and customizable optics:

## High-content analysis

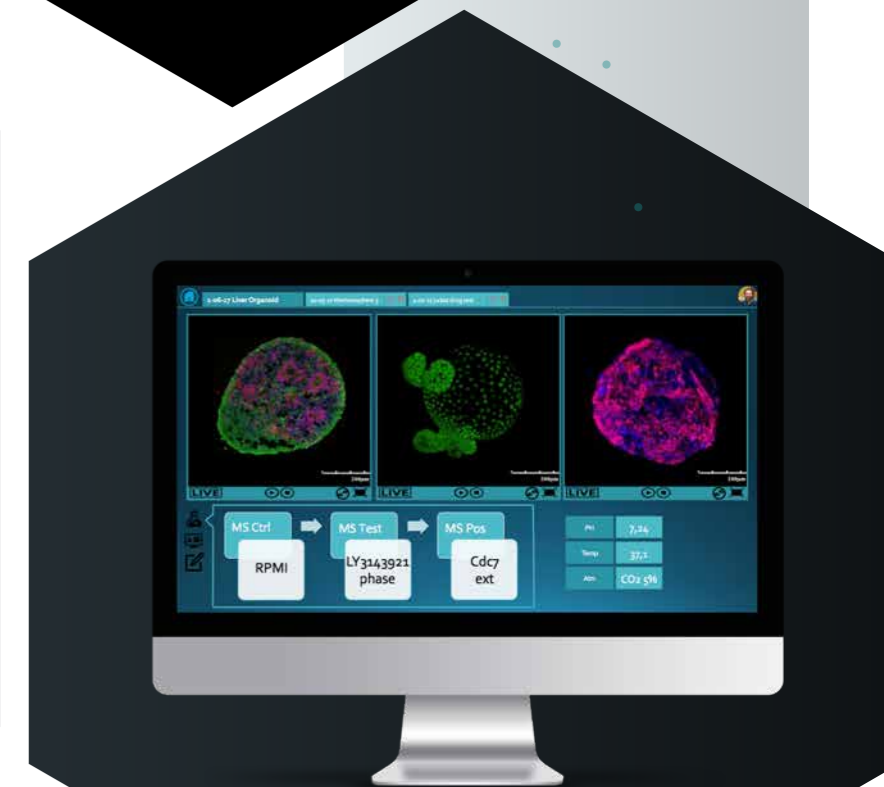


**Cell Type:** Jurkat  
**Experiment Duration:** 2,5h  
**Optics:** Brightfield, 20X



**Credits:**  
 Azzurra Sargenti,  
 Ph.D. University of Bologna,  
 Department of Pharmacy &  
 Biotechnology.

**Cell Type:** Jurkat  
**Probe:** Vybrant Cell-Labeling Solutions  
**Experiment Duration:** 2,5h  
**Optics:** FITC filter, 20X



## TECHNICAL SPECIFICATIONS

|                                  |  |
|----------------------------------|--|
| <b>Optics</b>                    | Magnification: 20X;<br>Illumination: Brightfield, Phase Contrast, EPI fluorescence.  |
| <b>Fluidics</b>                  | Disposable Microfluidics PDMS Chips.   |
| <b>Hardware</b>                  | Integrated temperature and atmosphere controller, Gas tank.  |
| <b>Software</b>                  | Optical alignment technology.<br>Full Data Storage:<br>Cell parameters, cell tracking;<br>Automatic report generation;<br>Remote control of culture conditions and time lapse evolution. |
| <b>Installation requirements</b> | Dimensions: 60 X 50 X 40 cm (W X D X H), Weight: 25 kg.<br>Environment: 15° - 30°C, 80% RH, Power: 230VAC (EU); 110VAC (USA).  |